

Model Number:  
**2OACH6032**

# NCS

NATIONAL CLIMATE SOLUTIONS INC.



**HEATING &  
COOLING**



## 5 Ton Deluxe Portable Heat Pump

### Product Features:

- Solid State Electronic Controller
- Automatic Mode Changeover
- Manual or Auto 6-Speed Fan Control
- Large LED Display
- Swivel Ball Bearing Casters with Locking Fronts
- Condensate Overflow Alert
- High Pressure Safety Switch
- Three Phase Monitor
- Washable Electrostatic Air Filters

### Technical Specifications:

Specifications subject to change without notice

Cooling Capacity:	60,100 BTUH
Heating Capacity:	53,500 BTUH
Voltage:	208-230V, 60Hz, 3PH
Amps:	20.4
Total Watts:	6000
Cooling Ambient:	Operating Range 65° to 105°
Heating Ambient:	Operating Range 40° to 85°
Outdoor Use:	No
Cooling Capacity:	Total BTUH at 80°DB/67°WB Return Air 95°F Outdoor at High Fan Speed.
Heating Capacity:	Total BTUH at 70°DB/60°WB Indoor, 47°DB/43°WB Outdoor
In Rush Amps:	162
Plug Type:	L15-30P
EER:	10.0
<b>NOTE:</b> Dedicated circuit and time delay fuses / circuit breakers are recommended.	
Compressor:	Scroll
Compressor HP:	5
Compressor LRA:	137
EVAP CFM - High:	1950
EVAP Motor HP:	1
COND CFM	2200
COND MOTOR HP	1
Condensate Removal:	Pump Automatic 20' Vertical Lift
Refrigerant Charge:	80 oz R-410A
Height:	54.2"
Width:	28.2"
Depth:	41.0"
Net Weight:	485 lbs.

For more information contact:  
**National Climate Solutions Inc.**  
[sales@nationalclimatesolutionsinc.com](mailto:sales@nationalclimatesolutionsinc.com)  
**(844) 682-4247**

**PROUDLY MADE IN THE  
USA**

# NCS

NATIONAL CLIMATE SOLUTIONS INC.

## Optional Accessories



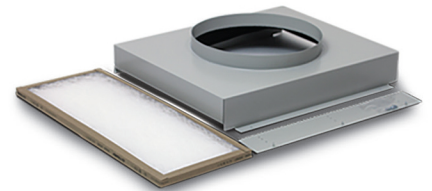
### Ceiling Panel Kit

For discharging the condenser air above a drop ceiling  
Part Number: CK-16



### Nozzle Kit / 2 x 8"

For directional cooling  
Part Number: 2NK-3



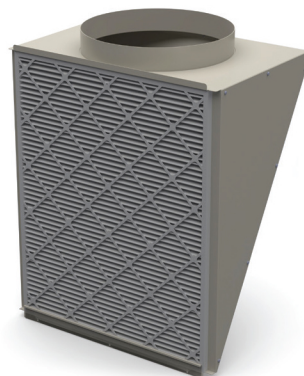
### Evaporator Return Air Plenum

For ducting return air  
Part Number: DEP-16



### Discharge Duct Adapter

For extended duct length  
Part Number: 2DDA-16



### Condenser Return Air Plenum

For installations where it is required to duct air to the inlet of the condenser.  
Part Number: DCP-5

  
PROVIDING A BETTER CLIMATE ANYWHERE.