

Model Number:
PWC3634

NCS

NATIONAL CLIMATE SOLUTIONS INC.



**WATER
COOLED**



3 Ton Portable Water-Cooled Air Conditioner

Product Features:

- 24V Control Circuit with Non-Programmable Electronic Thermostat
- Swivel Ball Bearing Casters with Locking Fronts
- 2-Speed Fan Switch
- Condensate Overflow Alert Light
- High Pressure Safety Switch
- Three Phase Monitor
- Washable Electrostatic Air Filter

Technical Specifications:

Specifications subject to change without notice

Cooling Capacity:	36,100 BTUH
Voltage:	460V, 60Hz, 3PH
Amps:	4.7
Total Watts:	2700
Cooling Ambient:	Operating Range 65° to 105°
Outdoor Use:	No
Cooling Capacity:	Total BTUH at 80°DB/67°WB return air with 85°EWT and 105°LWT.
In Rush Amps:	48
Plug Type:	L16-20P
EER:	13.4

NOTE: Dedicated circuit and time delay fuses / circuit breakers are recommended.

Compressor:	Scroll
Compressor HP:	3
Compressor LRA:	35

EVAP CFM - High:	1200
EVAP Motor HP:	1/3

Water Line Connections	
Water In:	5/8 MF
Water Out:	5/8 MF
Drain:	3/8 MF

Condensate Removal:	Pump Automatic 20' Vertical Lift
---------------------	-------------------------------------

Refrigerant Charge:	24 oz R-410A
---------------------	--------------

Height:	50"
Width:	27.2"
Depth:	19.5"
Net Weight:	310 lbs.

Estimated Condenser Water Usage*

Entering Water Temp:	
Condensing Water at 60°:	2.2 GPM
Condensing Water at 85°:	9 GPM

* Condenser Water Usage is base on 80/67 Ambient, and incoming water temperatures as shown. Usages will vary with water conditions and ambient temperatures.

For more information contact:
National Climate Solutions Inc.
sales@nationalclimatesolutionsinc.com
(844) 682-4247

**PROUDLY MADE IN THE
USA**

NCS

NATIONAL CLIMATE SOLUTIONS INC.

Optional Accessories



Hose Kits:

Designed for use with OceanAire Portable Water-Cooled air conditioners, the hose kits consist of three hoses:

Water-In (5/8) black hose made of reinforced PVC tubing

Water-Out (5/8) red hose made of reinforced PVC tubing

Drain (3/8) yellow hose made of gray reinforced PVC tubing

Hose Kit / 10 Foot

Part Number: HK-3

Hose Kit / 25 Foot

Part Number: HK-4

Hose Kit / 40 Foot

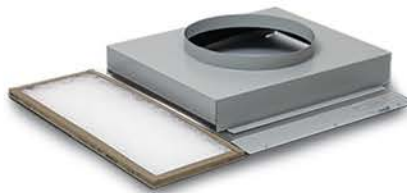
Part Number: HK-6



Nozzle Kit / 2 x 8"

For directional cooling / heating

Part Number: 2NK-3



Evaporator Return Air Plenum

For ducting return air

Part Number: DEP-16



Discharge Duct Adapter

For extended duct length

Part Number: 2DDA-16


PROVIDING A BETTER CLIMATE ANYWHERE.