

Model Number:
PWC2412

NCS

NATIONAL CLIMATE SOLUTIONS INC.



**WATER
COOLED**



2 Ton Portable Water-Cooled Air Conditioner

Product Features:

- 24V Control Circuit with Non-Programmable Electronic Thermostat
- Swivel Ball Bearing Casters with Locking Fronts
- 2-Speed Fan Switch
- Condensate Overflow Alert Light
- High Pressure Safety Switch
- Washable Electrostatic Air Filter

Technical Specifications:

Specifications subject to change without notice

Cooling Capacity:	23,950 BTUH
Voltage:	208-230V, 60Hz, 1PH
Amps:	9.9
Total Watts:	2100
Cooling Ambient:	Operating Range 65° to 105°
Outdoor Use:	No
Cooling Capacity:	Total BTUH at 80°DB/67°WB return air with 85°EWT and 105°LWT.
In Rush Amps:	55
Plug Type:	6-20P, LCDI
EER:	11.4

NOTE: Dedicated circuit and time delay fuses / circuit breakers are recommended.

Compressor:	Rotary
Compressor HP:	2
Compressor LRA:	48

EVAP CFM - High:	810
EVAP Motor HP:	1/3

Water Line Connections	
Water In:	3/8 MF
Water Out:	3/8 MF
Drain:	3/8 MF

Condensate Removal:	Pump Automatic 20' Vertical Lift
---------------------	-------------------------------------

Refrigerant Charge:	16 oz R-410A
---------------------	--------------

Height:	44.7"
Width:	20.5"
Depth:	16.0"
Net Weight:	170 lbs.

Estimated Condenser Water Usage*

Entering Water Temp:	
Condensing Water at 60°:	1.55 GPM
Condensing Water at 85°:	6 GPM

* Condenser Water Usage is base on 80/67 Ambient, and incoming water temperatures as shown. Usages will vary with water conditions and ambient temperatures.

For more information contact:
National Climate Solutions Inc.
sales@nationalclimatesolutionsinc.com
(844) 682-4247

**PROUDLY MADE IN THE
USA**

NCS

NATIONAL CLIMATE SOLUTIONS INC.

Optional Accessories



Hose Kits:

Designed for use with OceanAire Portable Water-Cooled air conditioners, the hose kits consist of three hoses:

Water-In (3/8) black hose made of reinforced PVC tubing

Water-Out (3/8) red hose made of reinforced PVC tubing

Drain (3/8) yellow hose made of gray reinforced PVC tubing

Hose Kit / 10 Foot

Part Number: HK-1

Hose Kit / 25 Foot

Part Number: HK-2

Hose Kit / 40 Foot

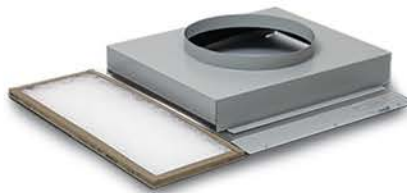
Part Number: HK-5



Nozzle Kit / 2 x 6"

For directional cooling

Part Number: 2NK-2



Evaporator Return Air Plenum

For ducting return air

Part Number: 2DEP-12



Discharge Duct Adapter

For extended duct length

Part Number: 2DDA-10


PROVIDING A BETTER CLIMATE ANYWHERE.