

Model Number:  
**OWC3632**

# NCS

NATIONAL CLIMATE SOLUTIONS INC.



**WATER  
COOLED**



## 3 Ton Deluxe Portable Water-Cooled Air Conditioner

### Product Features:

- Solid State Electronic Controller
- Manual or Auto 6-Speed Fan Control
- Large LED Display
- Swivel Ball Bearing Casters with Locking Fronts
- Internal Condensate Pump with Overflow Alert
- Water Regulating Valve
- High Pressure Safety Switch
- Washable Electrostatic Air Filter
- Three Phase Monitor

### Technical Specifications:

Specifications subject to change without notice

Cooling Capacity:	36,100 BTUH
Voltage:	208-230V, 60Hz, 3PH
Amps:	9.3
Total Watts:	2700
Cooling Ambient:	Operating Range 65° to 105°
Outdoor Use:	No
Cooling Capacity:	Total BTUH at 80°DB/67°WB return air with 85°EWT and 105°LWT.
In Rush Amps:	80
Plug Type:	L15-20P
EER:	13.4

**NOTE:** Dedicated circuit and time delay fuses / circuit breakers are recommended.

Compressor:	Scroll
Compressor HP:	3
Compressor LRA:	77

EVAP CFM - High:	1200
EVAP Motor HP:	1/3

Water Line Connections	
Water In:	5/8 MF
Water Out:	5/8 MF
Drain:	3/8 MF

Condensate Removal:	Pump Automatic 20' Vertical Lift
---------------------	-------------------------------------

Refrigerant Charge:	24 oz R-410A
---------------------	--------------

Height:	51.0"
Width:	28.2"
Depth:	21.5"
Net Weight:	275 lbs.

### Estimated Condenser Water Usage\*

Entering Water Temp:	
Condensing Water at 60°:	2.2 GPM
Condensing Water at 85°:	9 GPM

\* Condenser Water Usage is base on 80/67 Ambient, and incoming water temperatures as shown. Usages will vary with water conditions and ambient temperatures.

For more information contact:  
**National Climate Solutions Inc.**  
[sales@nationalclimatesolutionsinc.com](mailto:sales@nationalclimatesolutionsinc.com)  
**(844) 682-4247**

**PROUDLY MADE IN THE  
USA**

# NCS

NATIONAL CLIMATE SOLUTIONS INC.

## Optional Accessories



### Hose Kits:

Designed for use with OceanAire Portable Water-Cooled air conditioners, the hose kits consist of three hoses:

**Water-In** ( 5/8 ) black hose made of reinforced PVC tubing

**Water-Out** ( 5/8 ) red hose made of reinforced PVC tubing

**Drain** ( 3/8 ) yellow hose made of gray reinforced PVC tubing

### Hose Kit / 10 Foot

Part Number: HK-3

### Hose Kit / 25 Foot

Part Number: HK-4

### Hose Kit / 40 Foot

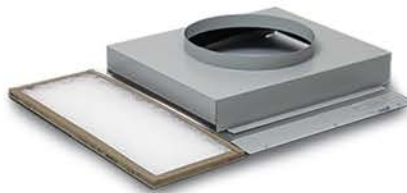
Part Number: HK-6



### Nozzle Kit / 2 x 8"

For directional cooling / heating

Part Number: 2NK-3



### Evaporator Return Air Plenum

For ducting return air

Part Number: DEP-16



### Discharge Duct Adapter

For extended duct length

Part Number: 2DDA-16

  
PROVIDING A BETTER CLIMATE ANYWHERE.